

# Burlington Infant School: Preventing Radicalisation and Extremism

## **Burlington Infant School**



## **Preventing Radicalisation and Extremism**

<b>Date:</b>	<b>September 2021</b>
<b>Date Due for Review</b>	<b>September 2022</b>
<b>Approved By:</b>	<b>Full Governing Body</b>

## Preventing Radicalisation and Extremism

**“Always do your best and be your best”**

### Rationale

*At Burlington Infant School we take our responsibility to safeguard children, young people and families from violent extremism very seriously. At Burlington Infant School we value and champion freedom of speech and the expression of beliefs and ideology as fundamental rights underpinning our school's and society's values. Burlington Infant School is committed to providing a secure environment for children, where children feel safe and are kept safe. All adults at the school recognise that safeguarding is everyone's responsibility irrespective of the role they undertake or whether their role has direct contact or responsibility for children or not.*

### Aims

- To provide a safe and secure environment free from the threat of radicalisation and extremism.
- To ensure staff are well trained and equipped to identify signs of children at risk from radicalization and extremism.
- To put in place robust systems for reporting and dealing with concerns about children who are vulnerable and at risk.

### Implementation

The definition of extremism we are using for this policy is:

*‘Vocal or active opposition to fundamental British values, including democracy, the rule of law, individual liberty and mutual respect and tolerance of different faiths and beliefs; and/or calls for the death of members of our armed forces, whether in this country or overseas’.*

At Burlington Infant School every member of staff is very clear that there is no place for extremist views of any nature in our school, whether from the children, parents, staff or governors or external groups such as the school community, external agencies or individuals. We believe that every child must see school as a safe place where they can explore controversial issues safely and where our teachers encourage and facilitate the safe and open discussion of values and beliefs in an age appropriate way.

At Burlington Infant School we recognise the dangers, extremism and exposure to extremist materials and influences, can pose to children resulting in children not achieving their potential both academically and socially. Any failure to protect children from extremist views is a failure of our duty to safeguard and protect children from harm.

# Burlington Infant School: Preventing Radicalisation and Extremism

## Recognising the Indicators

At Burlington Infant School we understand that children who become involved in extremist actions come from a range of backgrounds.

Children may become vulnerable to radicalisation through a range of social, personal and environmental factors.

### **Indicators of vulnerability to radicalisation and extremism include:**

- Children seen as having an identity crisis and may have become distanced from their cultural or religious heritage and are not sure of their place in society.
- Children who are having a personal crisis for example tensions within the family or those who have a sense of isolation and have become distanced from their friends.
- Children who have not met or lived up to their aspirations or may have a sense of injustice or feel like a failure in society.
- Children whose personal circumstances may make them vulnerable such as community tensions or events in the child's country of origin.
- Involvement with criminal groups.
- Children with SEND may experience social interaction difficulties.
- Being in contact with known extremist recruiters.
- Accessing violent extremist websites, especially those with a social networking element.
- Possessing or accessing violent extremist literature.
- Justifying the use of violence to solve issues.
- Joining or seeking to join extremist organisations.
- Significant changes to appearance and/or behaviour.
- Experiencing a high level of social isolation resulting in issues of identity crisis and/or personal crisis.

Every member of staff will be equipped, skilled and confident to identify and challenge extremism. Prejudice of any kind and extremist views will always be challenged by staff and dealt with in accordance with the Behaviour and Anti Bullying Policy.

The lead person within Burlington Infant School for safeguarding in relation to protecting individuals from radicalisation and involvement in terrorism is the Headteacher and Designated Safeguarding Lead, Mrs Booth.

If a member of staff has concerns they must immediately speak to the Headteacher who will provide support, intervention and assistance for the child.

Where necessary the school will seek external support from the Local Authority and/or local partnership structures working to prevent extremism. These include:

# Burlington Infant School: Preventing Radicalisation and Extremism

Humberside Police (non-emergency) – tel: 101

[prevent@humberside.pnn.police.uk](mailto:prevent@humberside.pnn.police.uk)

Twitter - @HumbPolPrevent

Safeguarding and Partnership Hub (previously EHash) Tel: 01482 395500

SPOC Youth and Family Support Tel: 01482 396623

If there is an immediate concern of risk or emergency, the school would phone 999.

National Counter Terrorism Hotline Tel: 0800 789 321

The **DfE** has dedicated a telephone helpline (**020 7340 7264**) to enable staff and governors to raise concerns relating to extremism directly.

Concerns can also be raised by email to: **counter.extremism@education.gsi.gov.uk**.

Burlington Infant School will closely follow the locally agreed procedure as set out by the Local Safeguarding Children Board for safeguarding individuals vulnerable to extremism and radicalization as detailed in the Child Protection and Safeguarding Policy.

## Principles and Approach to Teaching

- At Burlington Infant School we will eradicate the myths and assumptions that can lead to some young people becoming alienated and disempowered.
- The school will teach this through PSHE, RE lessons and in assemblies.
- At Burlington Infant School we will aim to create a safe environment for discussions between staff and children. This will help to build resilience in children and improve their skills for collaborative working.
- At Burlington Infant School we will ensure that our approach to teaching enables our children to build up resilience to extremism and gives children a positive sense of identity.
- Through our teaching of British values we will promote the values of democracy, the rule of law, individual liberty, mutual respect and tolerance for those with different faiths and beliefs.
- At the core of our work are the values of respect for one another and to tolerance of difference.
- We will also work in partnership with our local community and families to challenge extremist views.

# Burlington Infant School: Preventing Radicalisation and Extremism

## External Support

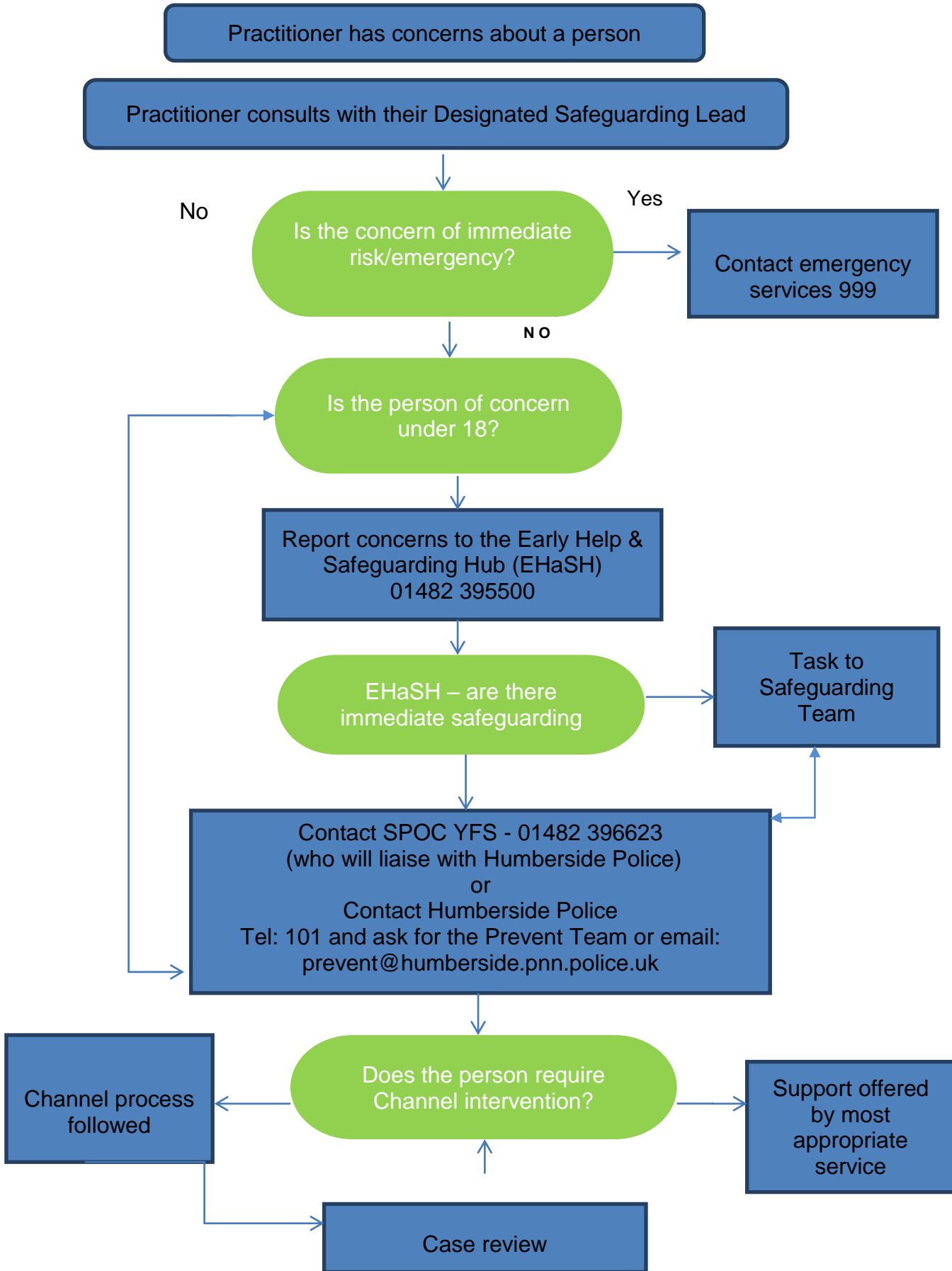
- At Burlington Infant School we use carefully vetted external agencies and speakers to enrich the experiences of our children and help prevent and tackle extremist views.
- We will ensure that any messages communicated to children are consistent with the ethos of the school and do not marginalise any communities, groups or individuals.
- All activities are carefully planned to meet the needs of the children and are continually monitored and evaluated for effectiveness.

## Disability Equality Impact Assessment

This policy has been written with reference to and in consideration of the school's Disability Equality Scheme. Assessment will include consideration of issues identified by the involvement of disabled children, staff and parents and any information the school holds on disabled children, staff and parents.

**Any questions or concerns regarding this policy should be made to Mrs Booth, Headteacher. Please see attached flowchart for how to deal with any concerns that a person has or is being radicalized into extremist behavior.**

# Burlington Infant School: Preventing Radicalisation and Extremism



## [Burlington Infant School: Preventing Radicalisation and Extremism](#)

**Safeguarding and Partnership Hub (previously EHaSH) – 01482 395500**  
**SPOC Youth and Family Support – 01482 396623**

**Humberside Police (non-emergency) – tel: 101**  
**[prevent@humberside.pnn.police.uk](mailto:prevent@humberside.pnn.police.uk)**  
**Twitter - @HumbPolPrevent**

**National Counter Terrorism Hotline – 0800 789 321**

The **DfE** has dedicated a telephone helpline (**020 7340 7264**) to enable staff and governors to raise concerns relating to extremism directly.

Concerns can also be raised by email to:  
**[counter.extremism@education.gsi.gov.uk](mailto:counter.extremism@education.gsi.gov.uk)**.

Please note that the helpline is not intended for use in emergency situations, such as a child being at immediate risk of harm or a security incident, in which case the normal emergency procedures should be followed.

**[www.educateagainsthate.com](http://www.educateagainsthate.com)** - A website for parents, teachers and school leaders giving practical advice on protecting children from extremism and radicalisation.